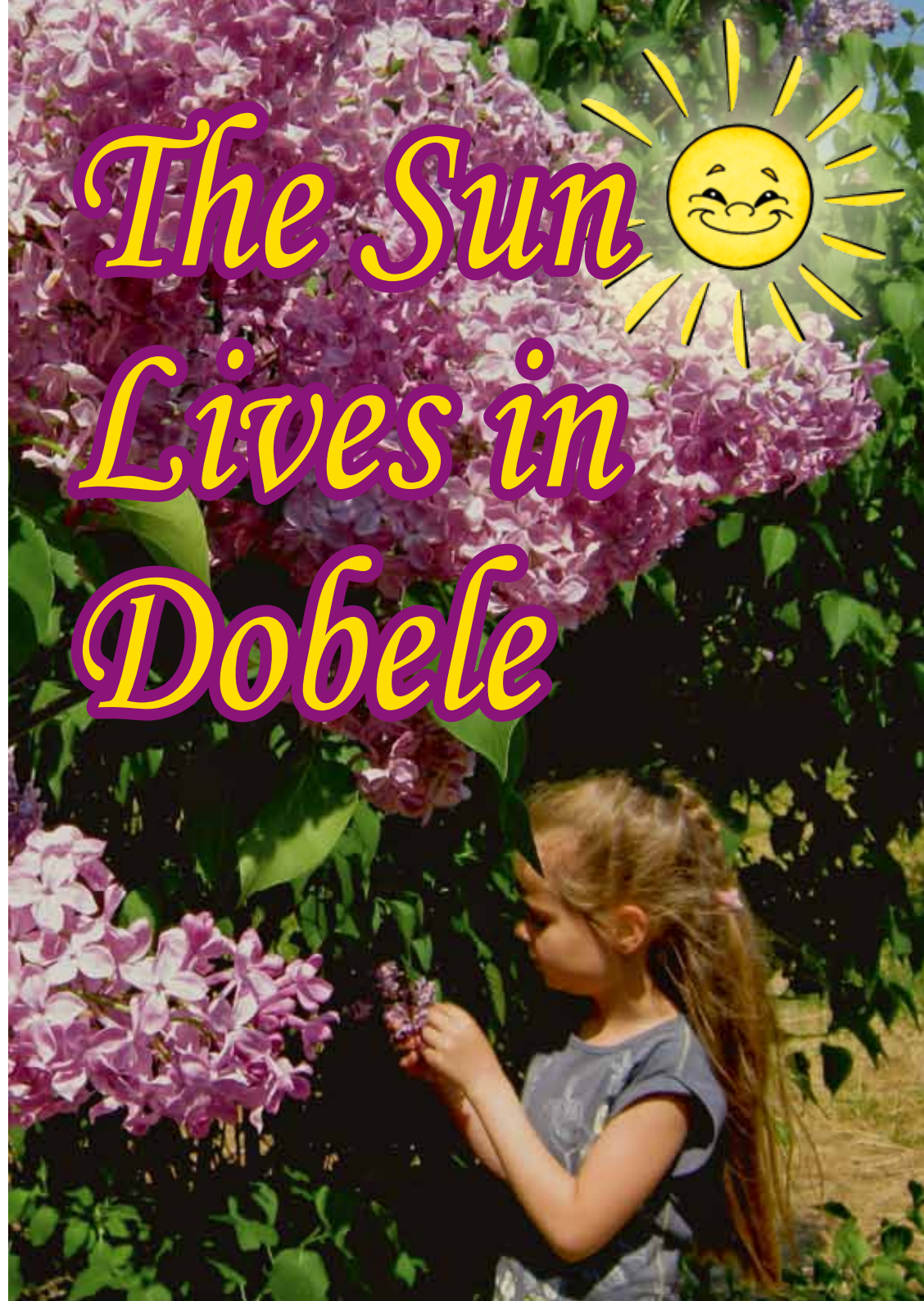
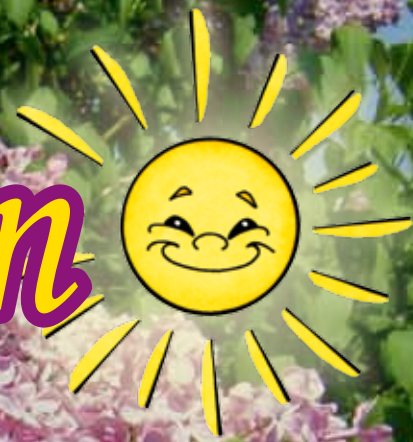
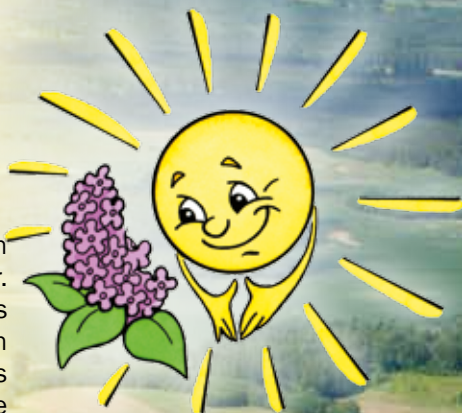


*The Sun
Lives in
Dobele*



The Sun Lives in Dobele



For more than 755 years, Dobele has been flourishing on the banks of the Bērze River. We say with pride – the Sun lives in Dobele, as our provincial town enjoys most sunny days in Latvia. Dobele is also often called the Metropolis of Lilacs, as it has one of the largest lilac-tree gardens in Europe. In winter, the town turns into a meeting place for the Giant Dobele Snowmen.

Exclusively in Dobele

- ✓ One of the largest lilac gardens in Europe
- ✓ The Giant Snowmen's Fest
- ✓ A well - fountain worthy of a Guinness World Record
- ✓ Memorial to the victims of the communistic genocide – the largest one in Latvia
- ✓ The most beautiful stone garden in Latvia



Exclusively in Dobele surroundings

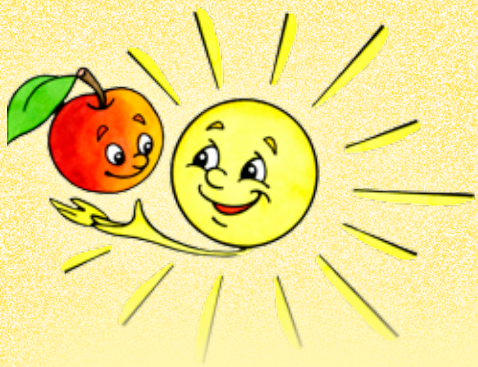
- ✓ The largest collection of orchids in Latvia
- ✓ The largest collection of mittens in Latvia
- ✓ Pokaiņi Forest, the most mysterious place in Latvia
- ✓ The largest bunker of national partisans in the Baltic States
- ✓ The Memorial Museum "Pikšas", a modern farm of Zemgale of the 30ties of the 20th century



The Livonian Order Castle Ruins

This is the site where the story about Dobele begins. The stone castle is the oldest building in Dobele, a cultural heritage monument of national significance. It was built from 1335 to 1347 on the site of the former Semigallian wooden castle and was occupied until 1730. The conservation works were started in 2002. You can have a guided tour around the impressive, romantic ruins by an attractive castle lady.





Marketplace, the Historical Centre of Dobele

The Marketplace is the centre of the town, where town festivals, concerts and fairs are held. The Marketplace developed along with the construction of the Dobele church in 1495.

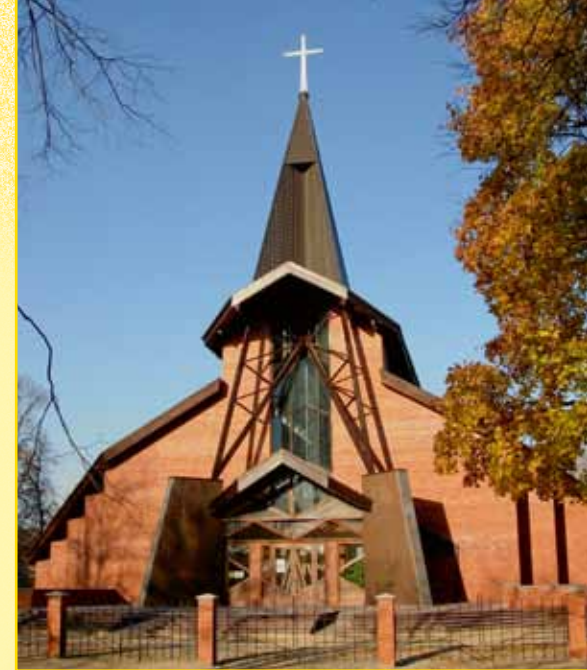
The place is encircled by two-storey brick buildings that were built in the beginning of the 20th century. The Marketplace itself underwent reconstruction in 2011, during which it was paved with cobblestones and adorned with a fountain shaped as a giant well. It is the biggest well in Latvia.



Churches in Dobele

The Dobele Roman Catholic All-Saint Trinity Church was constructed in 2003. It attracts attention with its modern architectonic design.

The main vertical in the Dobele skyline is the 45 metres high bell-tower of the **Dobele Evangelic Lutheran Church**. The church was built in 1495. It houses a number of valuable art monuments. The monument in the church garden is dedicated to August Bielenstein (1826 – 1907), a pastor of the German parish and an outstanding researcher of the Latvian language and ethnography.





Monuments in Dobele



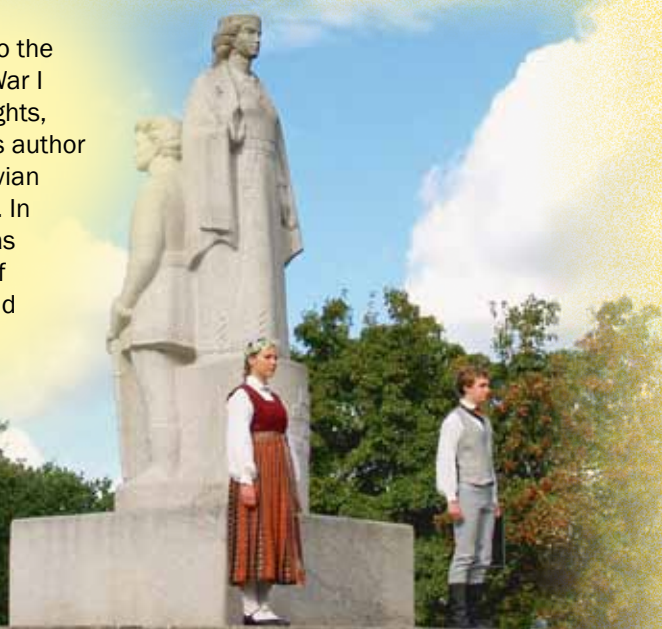
Memorial Rock commemorating Semigallians' departure from Dobele

In 1289, after fierce fights with the Livonian Order, the Semigallian tribes burnt down their wooden castle and undefeated left Dobele for Lithuania.



Memorial to the victims of the communistic genocide near the Dobele Railway Station is the largest memorial in Latvia for the politically repressed people. This is where the deportations of the inhabitants of Dobele and its vicinity started on June 14, 1941, and March 25, 1949.

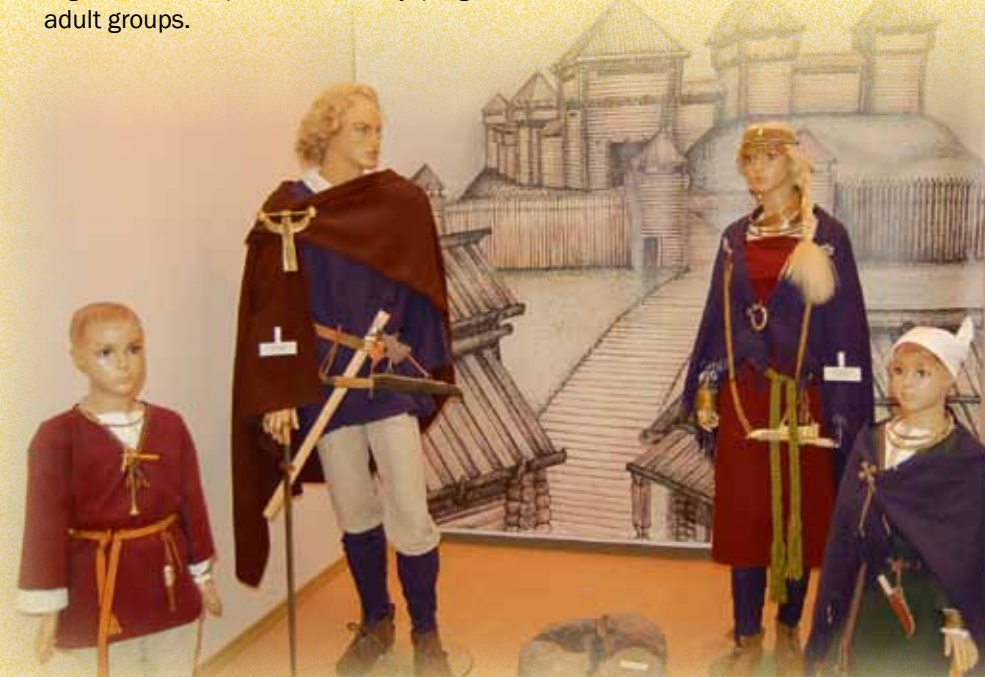
Dobele Liberation Monument, dedicated to the soldiers fallen in World War I and Latvia's liberation fights, was unveiled in 1940. Its author was the outstanding Latvian sculptor Kārlis Zemdega. In 1950, the monument was destroyed on the order of the soviet authorities, and renovated in 1996.

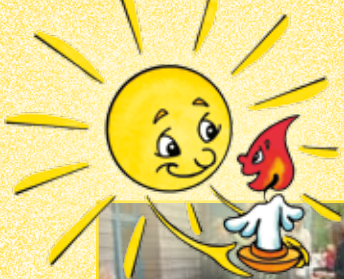


Dobele Local History Museum



Museum's permanent exhibition "Once upon a time in Dobele" gives insight into the life of Dobele until 1940s. Art and history exhibitions are exposed there on a regular basis. Special 'creativity programs' are available for school children and adult groups.





Dobele Crafts House



The House is open since 2010. The visitors can observe demonstrations, take part in creative workshops and learn both ancient and modern crafts – weaving, wadding, knitting and many more.

The House offers various exhibitions of craftworks, evening meetings in the family room and presents national traditions.

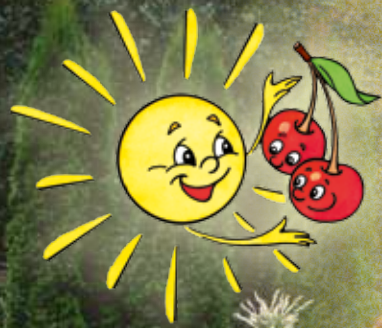


Garden of the breeder Pēteris Upītis

Dobele is famous for the Latvian State Fruit-Growing Institute with its vast and beautiful breeding garden. More than 5000 species and hybrids of fruit-bearing plants are cultivated in an area of 45 hectares. The lilac collection with more than 200 species and hybrids is the largest in Latvia and one of the largest in the world. Guided tours around the garden are available.

In the museum of the breeder Pēteris Upītis, the founder of the garden, you can get acquainted with his work and personality.





The Beautiful Gardens

The Štelmaheri Family Garden of Stones created by Lilija and Alfrēds Štelmaheri is called the Fairy Tale of Stones, or the Miracle Garden. Compositions of flowers and shrubs enrich the exhibition of stones.

The Klūgas Family Landscape Garden is among the nicest ones in Latvia. You will love the vast grass-plots with flowerbeds, the old trees and the cute pond.

The Garden of Beautiful and Practical Ideas is created by Līga un Aivars Beņķi. It will inspire you and give you great ideas for planning and creating a practical yet beautiful garden of your own.



Snowmen Time in Dobele



As soon as the main Christmas tree is lit up in town, huge snowmen, made of insulation material and candles, show up in the town squares. Their various looks are designed by popular Latvian artists.





Let's Celebrate Together!

Celebrations in Dobele follow the annual path of the Sun through the sky. People come from everywhere to enjoy the Cherry Blossom Festival, the Summer Solstice and the Old Castle celebrations, the Apple Festival and the Snowmen's Party. In addition to these events, you are also welcome to the annual Dobele Municipality Festival, the Arts and Crafts Festival, various fairs and sports events!



Other places of interest in Dobele Municipality

- ✓ Pokaiņi Forest: the most mysterious place in Latvia
- ✓ Egons Tone's orchid collection; exotic animals and ponies in Apgulde
- ✓ The biggest mitten collection and the garden of wooden sculptures in „Lejnieki”, Bērze parish
- ✓ Īle National Partisans' Bunker – the largest one in the Baltic States
- ✓ „Pikšas” Farm, the museum of Kārlis Ulmanis, former President of Latvia
- ✓ Antiquities collection in „Līči”, Biksti parish
- ✓ Antiques storages in Dzintari and Abrakaši, Penkule parish
- ✓ “Rūķišu tējas”, a herbal tea farm in Krimūnas parish
- ✓ Legendary Lake Zebrus and Ezerlūķi Castle Mound
- ✓ The picturesque Lake Gaurats
- ✓ Lake Vipēdis, a fisherman's paradise



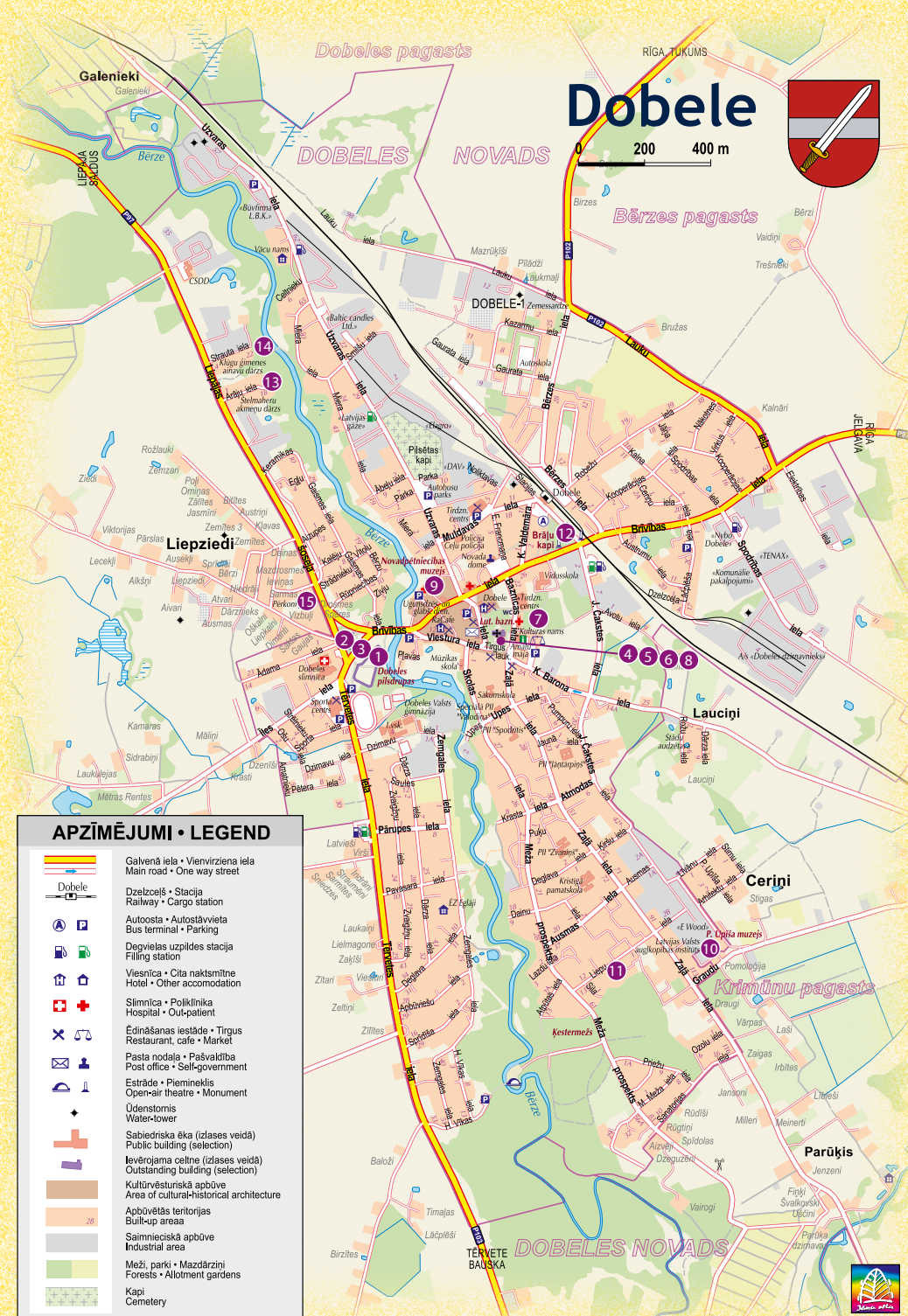
Facts about Dobele

- ✓ Dobele is situated in the southern part of Latvia, 70 km from Riga. The climate here is drier and the number of sunny days is bigger than elsewhere in Latvia.
- ✓ Dobele is one of the oldest populated places in Latvia. The first written records regarding Dobele date back to 1254, when Dobele was mentioned in the Act of the Division of Semigallia among different powers.
- ✓ Until the 12th century, this area was populated by the Semigallian tribes that had formed several administratively political centres here, Dobele being among the most important ones. Dobele's coat of arms depicts a Semigallian sword, symbolizing their heroic struggle against the German crusaders.
- ✓ In 1917, town rights were conferred on Dobele.
- ✓ The population of Dobele is about 11 thousand people.
- ✓ Since 2009, Dobele Town is the centre of the municipality.
- ✓ Nowadays, the industrial production is of great importance for the economical development of Dobele. Different household chemicals, chemical building materials, candles and cereal products are produced here.



Sites of interest

1. The Livonian Order Castle Ruins
2. Dobele Liberation Monument
3. Memorial Rock commemorating Semigallians' departure from Dobele
4. Marketplace – the Historical Centre of Dobele
5. The Dobele Evangelic Lutheran Church
6. Memorial to August Bielenstein
7. The Dobele Roman Catholic All-Saint Trinity Church
8. Dobele Crafts House
9. Dobele Local History Museum
10. The Garden and Museum of Pēteris Upītis
11. The Garden of Practical Ideas
12. Memorial to the Victims of the Communistic Genocide
13. The Štelmaheri Family Garden of Stones
14. The Klūgas Family Landscape Garden
15. Painter Ms Aija Prince – Galzone's workshop





Dobele Tourist Information Centre

Baznīcas iela 6, Dobele

Phone: 63723074, 26136682

E-mail: turisms@dobelev.lv

www.zemgaletourism.lv

www.dobelev.lv

Published

by Dobele Municipality, 2013

Compiled

by Dobele Tourist Information Centre

Printed

by "Jelgavas tipogrāfija" Ltd.